

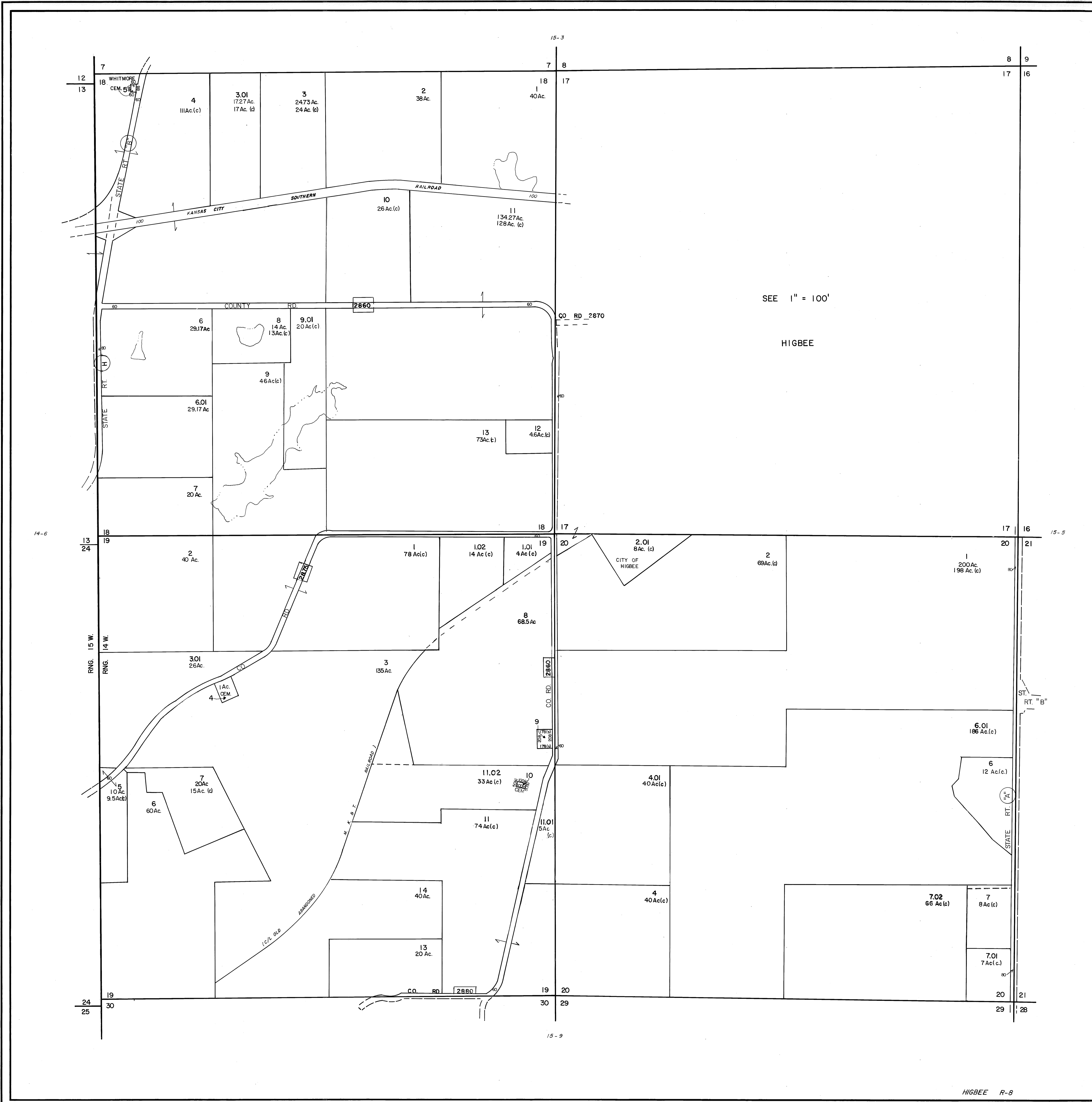
PLAN HOLD CORPORATION - IRVINE, CALIFORNIA  
REORDER BY NUMBER 075AR  
FOR THE USE OF PLAN OR INSTRUMENT

PLAN HOLD CORPORATION - IRVINE, CALIFORNIA  
REORDER BY NUMBER 075AR  
FOR THE USE OF PLAN OR INSTRUMENT

PLAN HOLD CORPORATION - IRVINE, CALIFORNIA  
REORDER BY NUMBER 075AR  
FOR THE USE OF PLAN OR INSTRUMENT

PLAN HOLD CORPORATION - IRVINE, CALIFORNIA  
REORDER BY NUMBER 075AR  
FOR THE USE OF PLAN OR INSTRUMENT

PLAN HOLD CORPORATION - IRVINE, CALIFORNIA  
REORDER BY NUMBER 075AR  
FOR THE USE OF PLAN OR INSTRUMENT



SEE 1" = 100'

HIGBEE

HIGBEE R-8

OWNERSHIP MAP  
**RANDOLPH COUNTY, MISSOURI**  
 PREPARED UNDER THE DIRECTION OF  
**STATE TAX COMMISSION OF MISSOURI**  
 AND  
**RANDOLPH COUNTY TAX ASSESSOR**  
 PREPARED BY  
**ROBINSON AND ASSOCIATES, INC.**  
 306 OAK AVE., SPRUCE PINE, N.C. 28777

SCALE: 1" = 400'  
 DATE OF MAP MARCH 5, 1981  
 DATE OF PHOTOGRAPHY 1978  
 AERIAL PHOTO NO. 178-61-2

SUBD. NO.	SUBDIVISION NAME	PLAT BOOK	PAGE

- LEGEND**
- STATE LINE ----- AREA (FROM DEED) 10.5Ac.
  - COUNTY LINE ----- AREA (CALCULATED) 10.5Ac.(c)
  - CORPORATION LINE ----- DIMENSION (FROM DEED) 16.5
  - DISTRICT LINE ----- DIMENSION (CALCULATED) 66'(s)
  - ROAD R/W ----- SUBDIVISION LOT NUMBER 23
  - TOWNSHIP & RANGE LINES ----- PARCEL NUMBER 45
  - RAILROAD R/W ----- WATER
  - PROPERTY LINE ----- INTERSTATE HIGHWAY 25
  - LAND HOOK ----- U. S. HIGHWAY 5
  - SECTION LINE ----- STATE HIGHWAY 3
  - INTERIOR OR ORIGINAL TRACT LINE ----- COUNTY HIGHWAY 33
  - BLOCK LIMIT (WHERE APPLICABLE) ----- ROADS, STREETS, CHURCHES, ETC. BY NAME 2 1 1
  - SECTION CORNERS ----- 1 1 1 2

**MAP SHEET INDEX**

6	5	4	3	2	1
7	8	9	10	11	12
13	14	15	16	17	18
19	20	21	22	23	24
25	26	27	28	29	30
31	32	33	34	35	36

**TOWNSHIP LOCATOR**

R15W				
R14W	R15W	R14W	R15W	
T56N	04	03	02	01
T55N	05	06	07	08
T54N	09	10	11	12
T53N	13	14	15	16
T52N	17	18	19	20

SECTIONS 17, 18, 19, & 20  
 TWP. 52 N. RNG. 14 W.  
**33-15-4-**  
 MAP NUMBER

REVISIONS

DATE	BY	CHANGES OR ADDITIONS